

## Up and running with Poul's MP3 Player Version 2.

### Before you start.

Poul's MP3 Player version 2 are different from version 1 in two major areas:

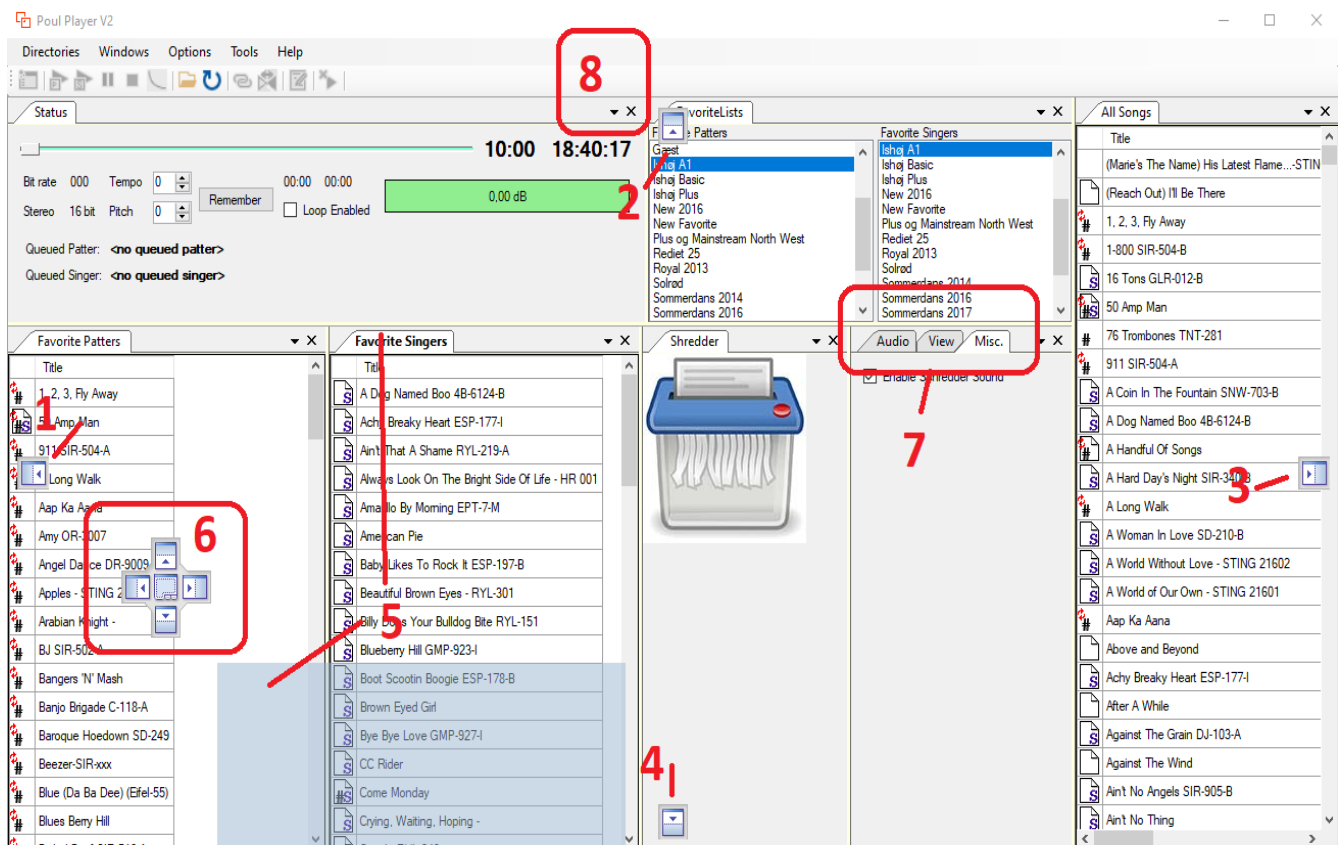
1. The Graphical User Interface (GUI) has changed dramatically.
2. The music is no longer played by a separate external background process.

### The new GUI.

Almost every part of Poul's MP3 Player version 2 are now small dockable windows. The purpose of this is to give you, the user, the capability to define and use the layout, which is the best for you.

### Docable.

Take a look at this screenshot:

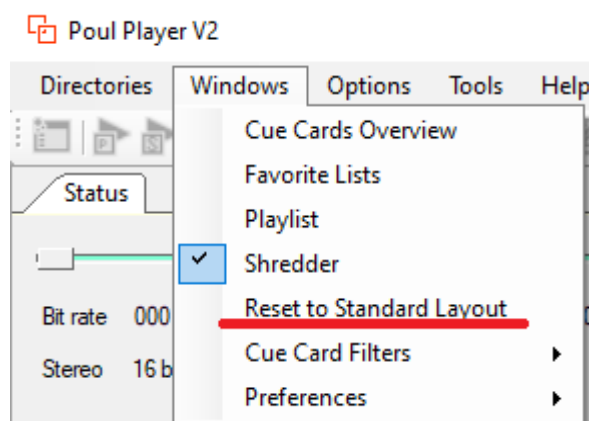


The elements are:

1. Icon for docking to the left. Move the mouse over this icon and the window element will dock to the left.
2. Icon for docking to the top. Move the mouse over this icon and the window element will dock to the top.
3. Icon for docking to the right. Move the mouse over this icon and the window element will dock to the right.

4. Icon for docking to the bottom. Move the mouse over this icon and the window element will dock to the bottom.
5. The shadow indicates the window element being dragged to a new docking position. In this case the window element is the Favorite Singers list. As you drag it along, the docking icons will change. To start dragging, you click and hold on the window element tab.
6. Icon for docking on another dockable window.
  - 1 The center icon, is the icon used to dock the dragged window element directly on the other element. The two elements will occupy the same space, size and position and will show up as tabs.
  - 2 The other four icons act the same as 1-4 above, except that the docking will not be relative to the external window, but instead relative to the window element under the mouse.
7. This is three window elements sharing same space, size and position. They are selectable by clicking on the tab.
8. If you want to remove a window element, you close it by clicking on the X to the right of the title.

If you want to go back to the standard layout you can use the menu:



### ***Resizable.***

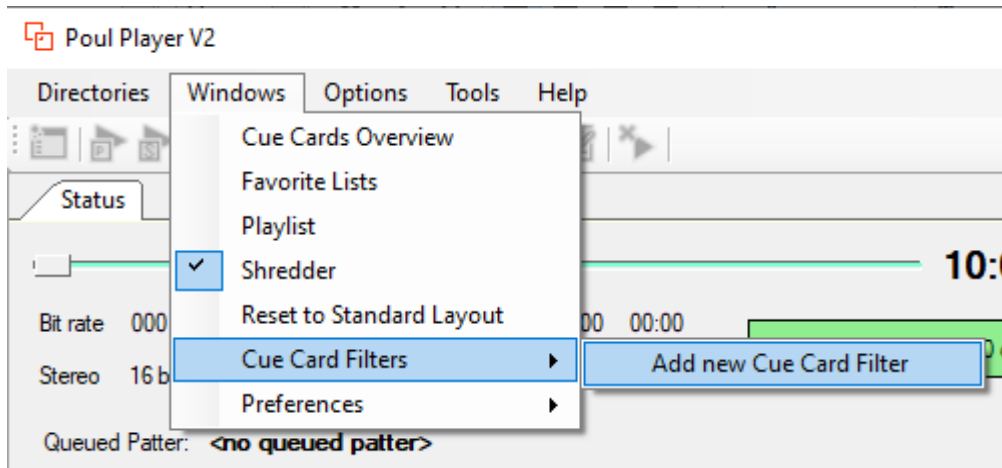
Almost all window elements are resizable. Just drag the window element border.

### ***What happened to the elements I used.***

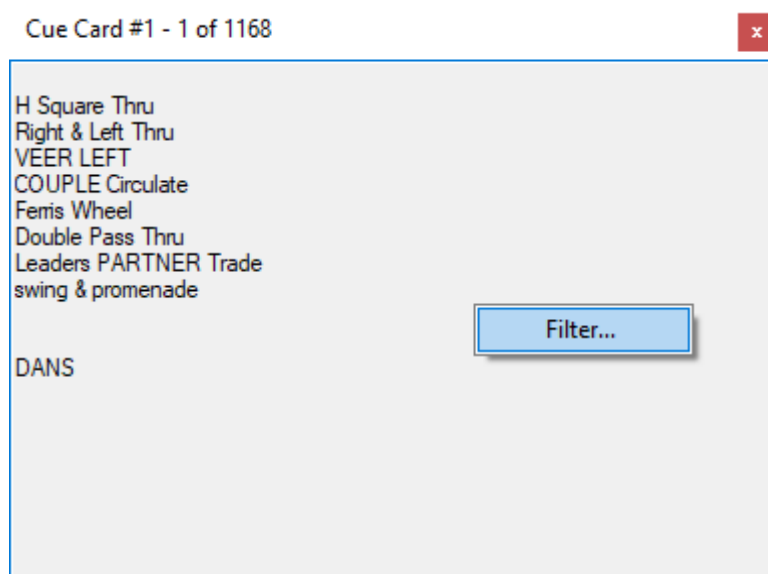
One of the other GUI changes is that you can open multiple favorite lists, cue cards and more.

### **Cue Cards**

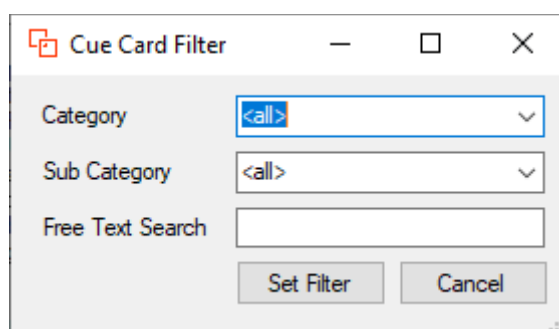
As a consequence, the cue card elements 1 and 2 do no longer exist. Instead you will have to add a cue card filter for each cue card you want. All this is done from within the Windows menu:



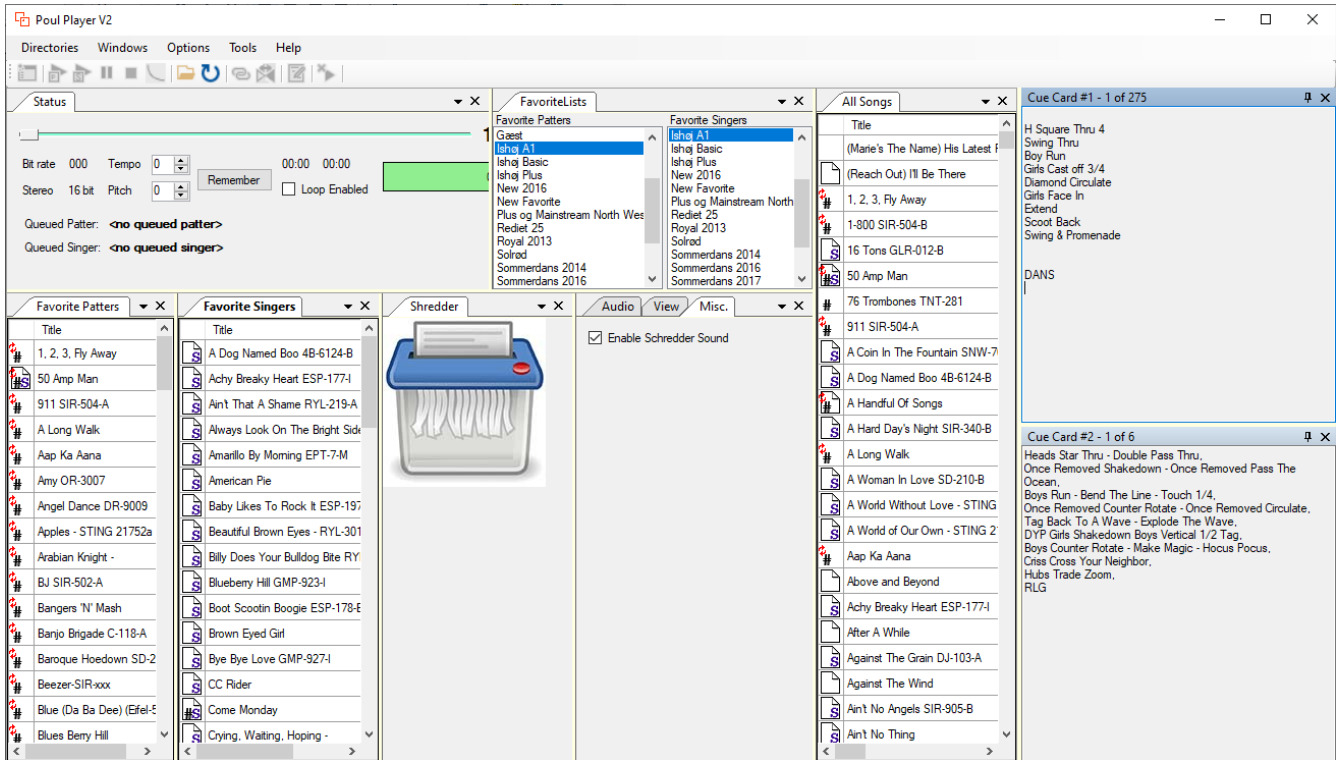
This will create a new window element. Dock the window where you want.



When you right click on the window you can specify the filter:



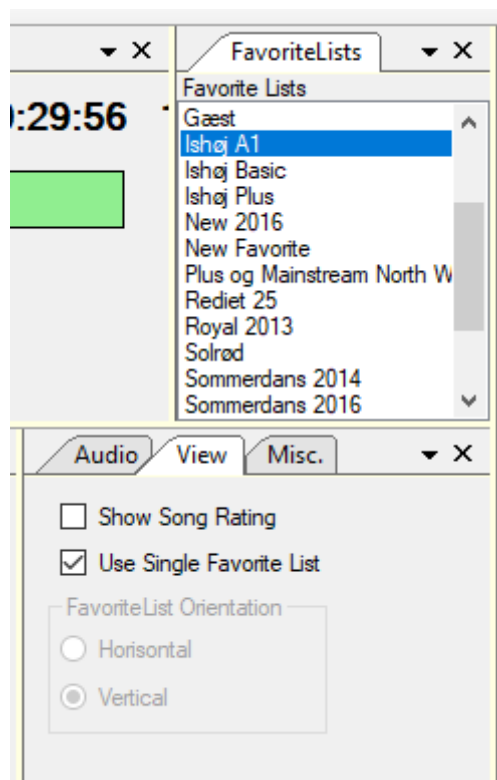
In the screen shoot below I have added two cue card filters and docked them below each other to the right in the main window:



When you close and reopen the player, it will remember which window elements you were using and also their space, size and position.

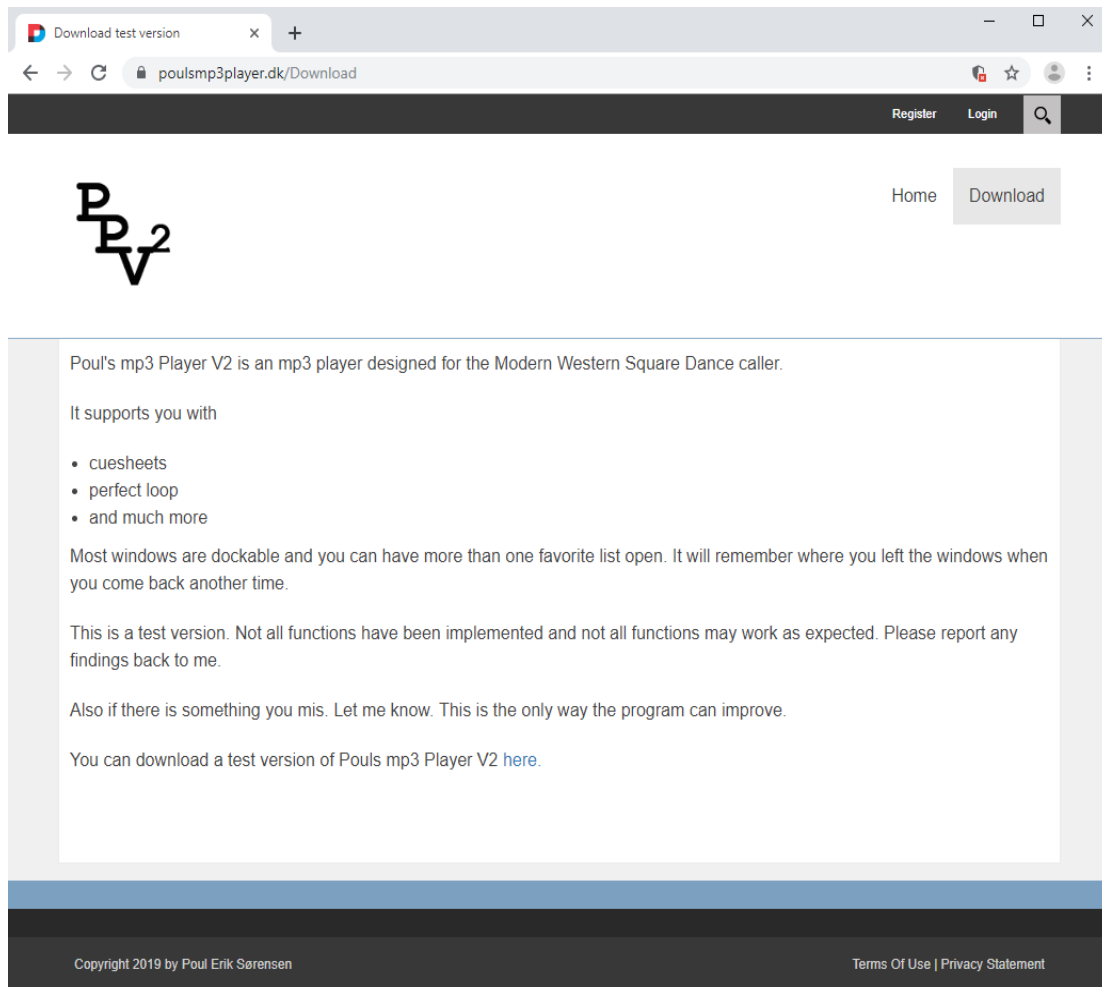
## Preferences.

Preferences will also be replaced with dockable elements. Currently the Audio, View and Miscellaneous preferences are dockable. Click on the corresponding tab to bring the preference tab in focus.



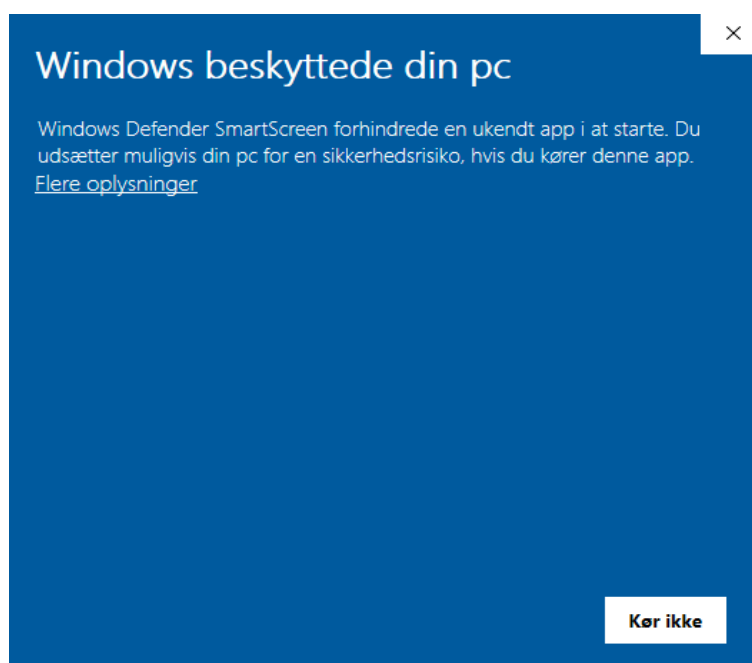
## Download Poul's MP3 Player version 2.

Navigate to [poulsmp3player.dk/download](http://poulsmp3player.dk/download):

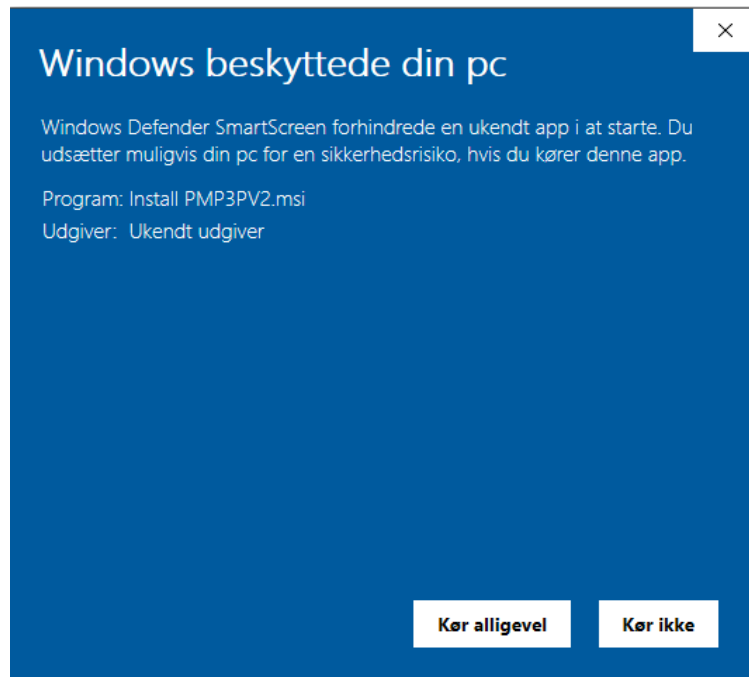


Click on the download link. If you are running windows defender or another protection software, you may see a screen telling you not to run this install file:

In Danish, the screen looks like this:

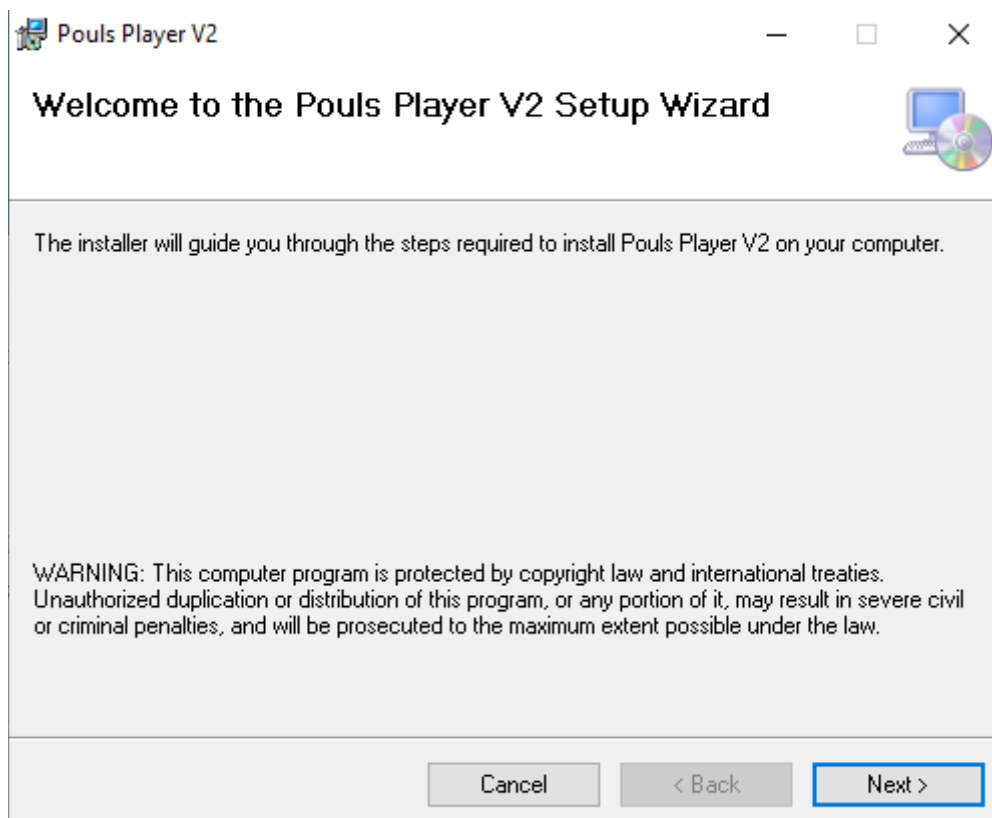


Click on [Flere oplysninger](#) (More information):



And click on Kør alligevel (Run ???).

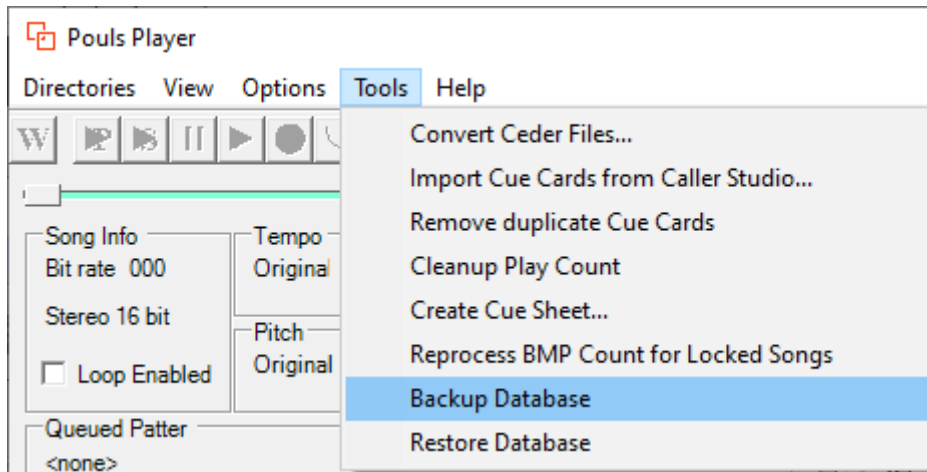
Now the install wizard will start and prompt you for where to install the player. I normally don not change any of these settings.



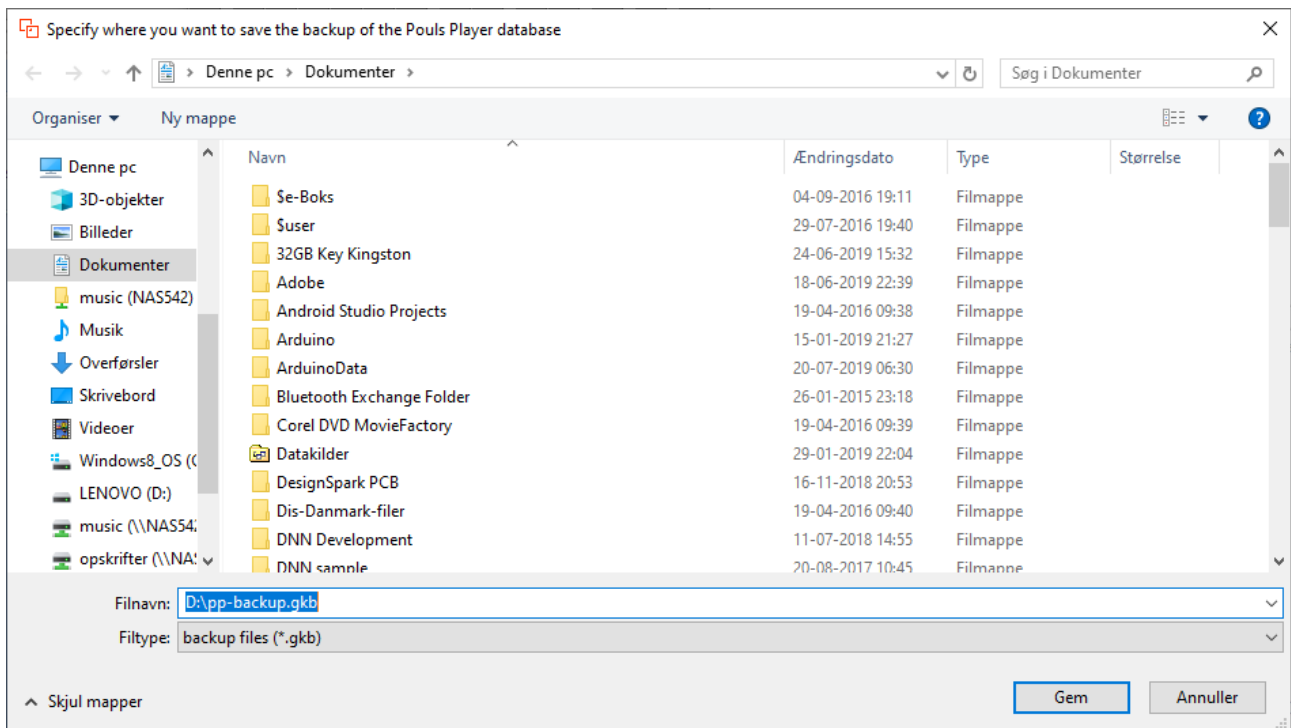
### Migrate existing Version 1 database

If you have an existing Poul's MP3 Player version 1, you can migrate the database by taking a backup using Poul's MP3 Player.

Start the player and navigate to the Tools menu and select Backup Database:



When you are prompted, specify the name of the backup file and where you want to save it:



**Caution:** If you are installing Version 2 on a new laptop, the location of your songs and lyrics sheets **MUST** be in the same path as on your old laptop. If not, Poul's MP3 Player will not be able to find your songs and the migration result will be useless!

### First time running Poul's MP3 Player version 2.

The first time you start Poul's MP3 Player version 2 it can not find a database. You can create an empty database or you can create one from a backup file. Poul's MP3 Player will prompt you:

If you have a backup answer Ja (Yes) and continue to import from the backup:

No existing database found.



Do you have a backup from a previous version of Pouls Player?

